



**VCR-adapter, female,  
flange stainless steel  
304L, VCR spigot:  
316L/1.4404, DN 16 CF**

---



**PFEIFFER** 

# VCR Adapter, female

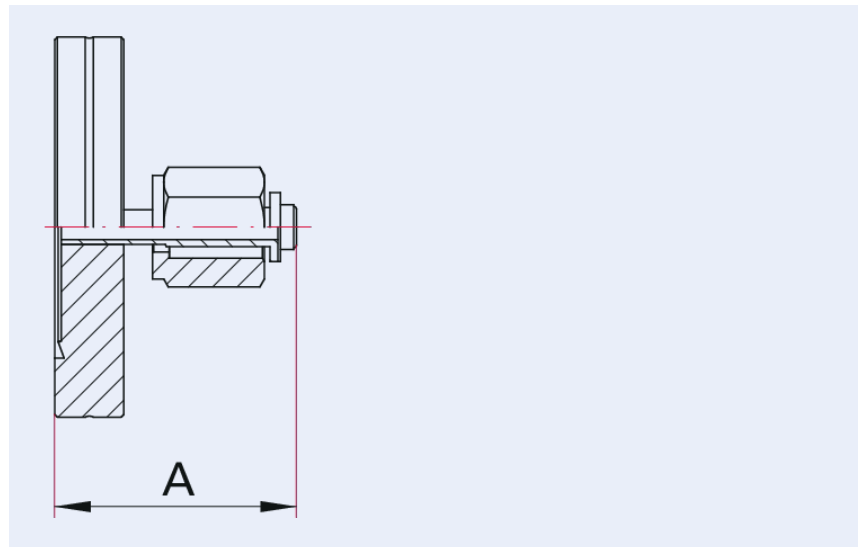


Illustration only

**VCR-adapter, female, flange stainless steel 304L, VCR spigot: 316L/1.4404, DN 16 CF**

- Original Swagelok® VCR-Adapter
- Other flange sizes and VCR adapters on request

## Dimensions



A | 47 mm

| <b>Technical Data</b>  | <b>VCR-adapter, female, flange stainless steel 304L, VCR spigot: 316L/1.4404, DN 16 CF</b>   |
|------------------------|--|
| VCR connection         | 1/2"   |
| Temperature range      | 196 – 300 °C   |
| Tightness              | <math>1 \cdot 10^{-11}</math> Pa m <sup>3</sup> /s   <math>7.5 \cdot 10^{-11}</math> Torr l/s   <math>1 \cdot 10^{-10}</math> mbar l/s |
| Connection flange      | DN 16 CF / G 1/2" VCR  |
| Pressure range         | $1 \cdot 10^{-11}$ hPa – to ambient pressure   |
| Material               | Flange: stainless steel 304L; VCR adapter: 1.4404/316L   |
| Temperature range max. | 300 °C   572 °F   573.15 K   |
| Temperature range min. | 196 °C   320.8 °F   77.15 K  |

| <b>Order number</b>   | <b>VCR-adapter, female, flange stainless steel 304L, VCR spigot: 316L/1.4404, DN 16 CF</b> |
|---|--|
| VCR-adapter, female, flange stainless steel 304L, VCR spigot: 316L/1.4404, DN 16 CF | 420AVF016-0500   |



Errors and/or changes excepted. - 5/14/2025

Are you looking for an optimum vacuum solution?

Talk to us:

**Pfeiffer Vacuum Components & Solutions GmbH Germany**

**T +49 551 99963-0**

**info-cs@pfeiffer-vacuum.com**

Or scan the barcode, to visit our web page:



<https://webportal.pfeiffer-vacuum.com/global/en/contact>

Follow Us On Social Media

#pfeiffervacuum



[www.pfeiffer-vacuum.com](http://www.pfeiffer-vacuum.com)

**PFEIFFER** 