

**Electrical feedthrough,  
1 kV, 25 A, 4 pins,  
DN 16 CF**

---



**PFEIFFER** 

# Electrical feedthrough

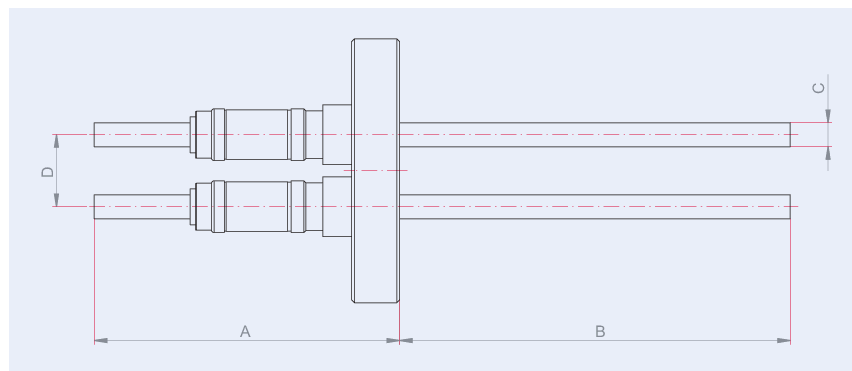


Illustration only

## Electrical feedthrough, 1 kV, 25 A, 4 pins, DN 16 CF

- Flange material: Stainless steel
- Conductor material: copper
- Conductor material stainless steel, molybdenum, nickel on request
- The specified voltages and currents refer to the following ambient conditions:  
room temperature, outside: dry air, inside: vacuum  $< 1 \cdot 10^{-4}$  hPa

## Dimensions



A	67 mm
B	35 mm
C	1.3 mm

<b>Technical Data</b>	<b>Electrical feedthrough, 1 kV, 25 A, 4 pins, DN 16 CF</b>
Materials in contact with media	Flange: Stainless steel, Conductor: Copper
Temperature range (vacuum side)	100 – 300 °C
Tightness	1 · 10 <sup>-11</sup> Pa m <sup>3</sup> /s   7.5 · 10 <sup>-11</sup> Torr l/s   1 · 10 <sup>-10</sup> mbar l/s
Heat up and cool down rate	≤20 K/min
Feedthrough voltage	1 kV DC
Current	25 A
Pins	4
Connection flange	DN 16 CF
Pressure range	1 · 10 <sup>-11</sup> hPa – to ambient pressure

<b>Order number</b>	<b>Electrical feedthrough, 1 kV, 25 A, 4 pins, DN 16 CF</b>
Electrical feedthrough, 1 kV, 25 A, 4 pins, DN 16 CF	420XST016-1-20-4



Errors and/or changes excepted. - 5/14/2025

Are you looking for an optimum vacuum solution?

Talk to us:

**Pfeiffer Vacuum Components & Solutions GmbH Germany**

**T +49 551 99963-0**

**info-cs@pfeiffer-vacuum.com**

Or scan the barcode, to visit our web page:



<https://webportal.pfeiffer-vacuum.com/global/en/contact>

Follow Us On Social Media

#pfeiffervacuum



[www.pfeiffer-vacuum.com](http://www.pfeiffer-vacuum.com)

**PFEIFFER** 