

**Claw clamp, aluminum
EN AW-6061; screw:
stainless steel A2-70,
DN 63-100 ISO-K**



PFEIFFER 

Claw clamp

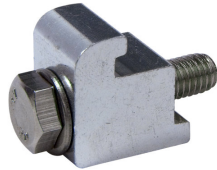
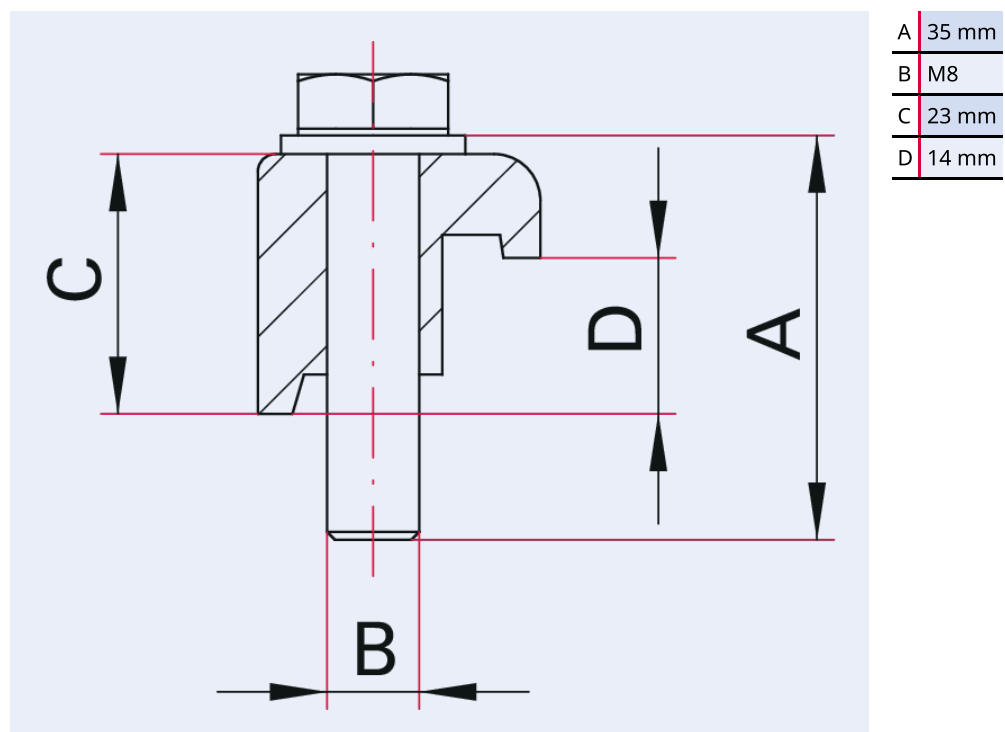


Illustration only

Claw clamp, aluminum EN AW-6061; screw: stainless steel A2-70, DN 63-100 ISO-K

- Zinc-plated and stainless steel versions: Suitable for use with metal and elastomer seals
- Aluminum version: Suitable for use with elastomer seals
- For installing an ISO-K flange on a base plate with a centering ring lying on it
- For a base plate with O-ring groove, please use the shorter claw clamp for the base plate with the sealing groove (BPD)
- Not to be used for the installation of turbo pumps! Use the fastening elements given in the corresponding operating instructions.

Dimensions



Technical Data	Claw clamp, aluminum EN AW-6061; screw: stainless steel A2-70, DN 63-100 ISO-K
Temperature range	196 – 200 °C
Connection flange	DN 63 – DN 100 ISO-K
Material	Aluminum EN AW-6061; screw: stainless steel A2-70
Temperature range max.	200 °C 392 °F 473.15 K
Temperature range min.	196 °C 320.8 °F 77.15 K

Order number	Claw clamp, aluminum EN AW-6061; screw: stainless steel A2-70, DN 63-100 ISO-K
Claw clamp, aluminum EN AW-6061; screw: stainless steel A2-70, DN 63-100 ISO-K	310BPR100



Errors and/or changes excepted. - 5/14/2025

Are you looking for an optimum vacuum solution?
Talk to us:
Pfeiffer Vacuum Components & Solutions GmbH Germany
T +49 551 99963-0
info-cs@pfeiffer-vacuum.com

Or scan the barcode, to visit our web page:



<https://webportal.pfeiffer-vacuum.com/global/en/contact>

Follow Us On Social Media
#pfeiffervacuum



www.pfeiffer-vacuum.com

PFEIFFER 