

**Electrical feedthrough,
5 kV, 25 A, 2 pins,
DN 40 CF**



PFEIFFER 

Electrical feedthrough

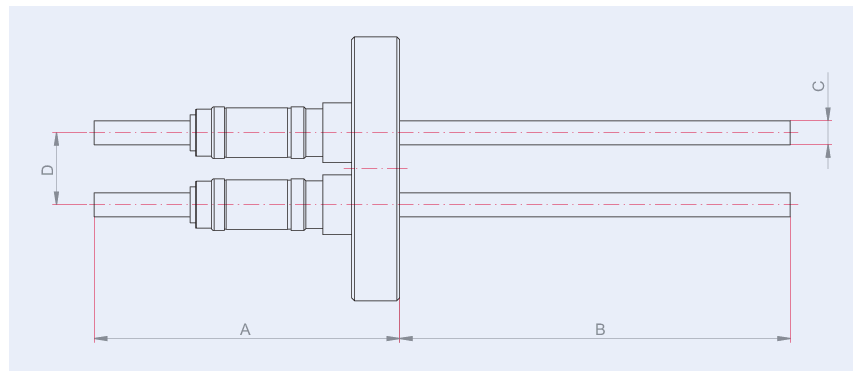


Illustration only

Electrical feedthrough, 5 kV, 25 A, 2 pins, DN 40 CF

- Flange material: Stainless steel
- Conductor material: copper
- Conductor material stainless steel, molybdenum, nickel on request
- The specified voltages and currents refer to the following ambient conditions:
room temperature, outside: dry air, inside: vacuum $< 1 \cdot 10^{-4}$ hPa

Dimensions



A	57 mm
B	45 mm
C	1.3 mm

Technical Data	Electrical feedthrough, 5 kV, 25 A, 2 pins, DN 40 CF
Materials in contact with media	Flange: Stainless steel, Conductor: Copper
Temperature range (vacuum side)	100 – 300 °C
Tightness	1 · 10 ⁻¹¹ Pa m ³ /s 7.5 · 10 ⁻¹¹ Torr l/s 1 · 10 ⁻¹⁰ mbar l/s
Heat up and cool down rate	≤20 K/min
Feedthrough voltage	5 kV DC
Current	25 A
Pins	2
Connection flange	DN 40 CF
Pressure range	1 · 10 ⁻¹¹ hPa – to ambient pressure

Order number	Electrical feedthrough, 5 kV, 25 A, 2 pins, DN 40 CF
Electrical feedthrough, 5 kV, 25 A, 2 pins, DN 40 CF	420XST040-5-15-2



Errors and/or changes excepted. - 5/14/2025

Are you looking for an optimum vacuum solution?

Talk to us:

Pfeiffer Vacuum Components & Solutions GmbH Germany

T +49 551 99963-0

info-cs@pfeiffer-vacuum.com

Or scan the barcode, to visit our web page:



<https://webportal.pfeiffer-vacuum.com/global/en/contact>

Follow Us On Social Media

#pfeiffervacuum



www.pfeiffer-vacuum.com

PFEIFFER 