

# Fluid feedthrough, double tube, stainless steel, DN 40 CF

---



**PFEIFFER** 

# Fluid feedthrough, single tube

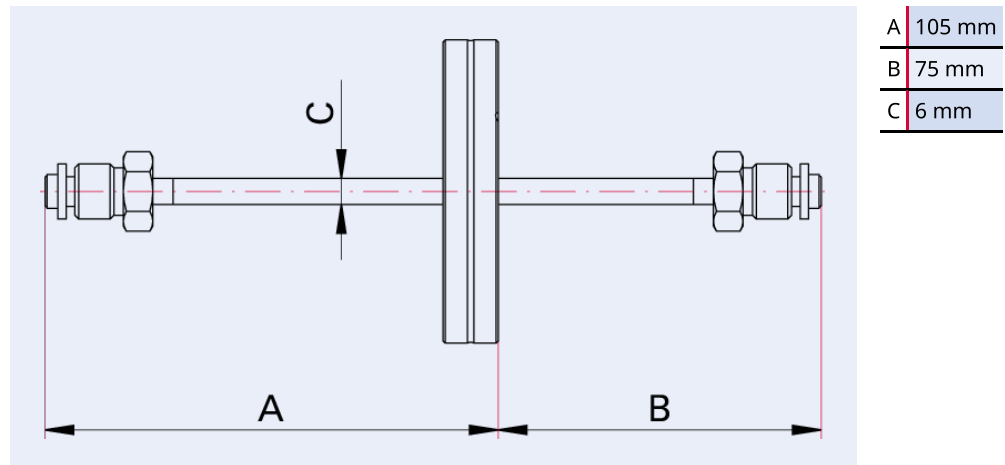


Illustration only

## Fluid feedthrough, double tube, stainless steel, DN 40 CF

- Flange material: Stainless steel
- V = VCR male 1/4"

## Dimensions



## Technical Data

## Fluid feedthrough, double tube, stainless steel, DN 40 CF

Materials in contact with media	Stainless steel
Temperature range (vacuum side)	196 – 300 °C
Vacuum side	V
Atmosphere side	V
Tightness	1 · 10 <sup>-11</sup> Pa m <sup>3</sup> /s   7.5 · 10 <sup>-11</sup> Torr l/s   1 · 10 <sup>-10</sup> mbar l/s
Connection flange	DN 40 CF
Pressure range	1 · 10 <sup>-11</sup> hPa – to ambient pressure

<b>Order number</b>	<b>Fluid feedthrough, double tube, stainless steel, DN 40 CF</b>
Fluid feedthrough, double tube, stainless steel, DN 40 CF	420XFL040-VV



Errors and/or changes excepted. - 5/14/2025

Are you looking for an optimum vacuum solution?

Talk to us:

**Pfeiffer Vacuum Components & Solutions GmbH Germany**

**T +49 551 99963-0**

**info-cs@pfeiffer-vacuum.com**

Or scan the barcode, to visit our web page:



<https://webportal.pfeiffer-vacuum.com/global/en/contact>

Follow Us On Social Media

#pfeiffervacuum



[www.pfeiffer-vacuum.com](http://www.pfeiffer-vacuum.com)

**PFEIFFER** 