



# Fluid feedthrough, double tube, stainless steel, DN 40 CF

---



**PFEIFFER** 

# Fluid feedthrough, double tube

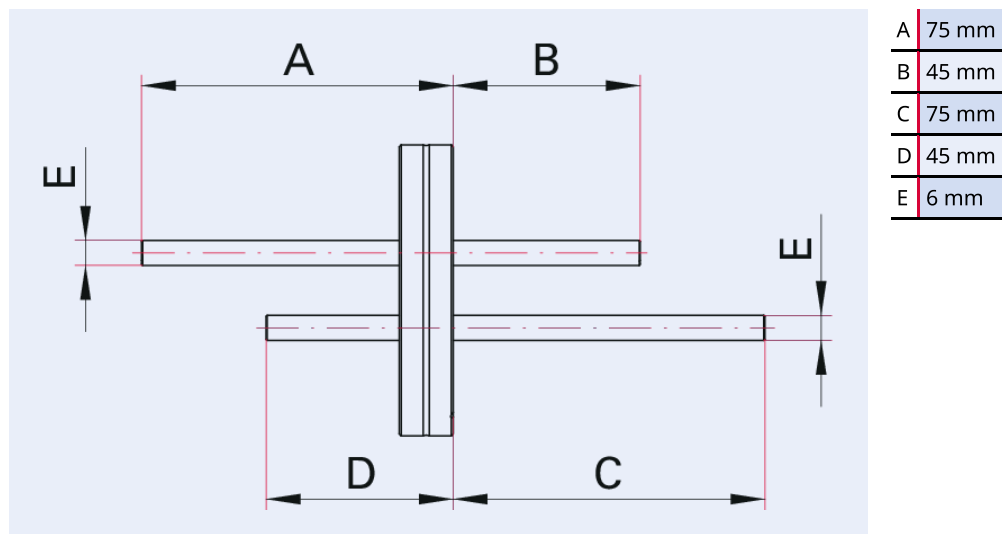


Illustration only

## Fluid feedthrough, double tube, stainless steel, DN 40 CF

- Flange material: Stainless steel
- P = tube end

## Dimensions



<b>Technical Data</b>	<b>Fluid feedthrough, double tube, stainless steel, DN 40 CF</b>
Materials in contact with media	Stainless steel
Temperature range (vacuum side)	196 – 300 °C
Vacuum side	P
Atmosphere side	P
Tightness	$1 \cdot 10^{-11}$ Pa m <sup>3</sup> /s   $7.5 \cdot 10^{-11}$ Torr l/s   $1 \cdot 10^{-10}$ mbar l/s
Connection flange	DN 40 CF
Pressure range	$1 \cdot 10^{-11}$ hPa – to ambient pressure

<b>Order number</b>	<b>Fluid feedthrough, double tube, stainless steel, DN 40 CF</b>
Fluid feedthrough, double tube, stainless steel, DN 40 CF	420XFL040-2-PP



Errors and/or changes excepted. - 5/14/2025

Are you looking for an optimum vacuum solution?

Talk to us:

**Pfeiffer Vacuum Components & Solutions GmbH Germany**

**T +49 551 99963-0**

**info-cs@pfeiffer-vacuum.com**

Or scan the barcode, to visit our web page:



<https://webportal.pfeiffer-vacuum.com/global/en/contact>

Follow Us On Social Media

#pfeiffervacuum



[www.pfeiffer-vacuum.com](http://www.pfeiffer-vacuum.com)

**PFEIFFER** 