

**Claw clamp for base
plate with sealing
groove, zinc-plated
steel, DN 63-100 ISO-K**



PFEIFFER 

Claw clamp

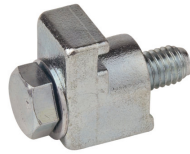
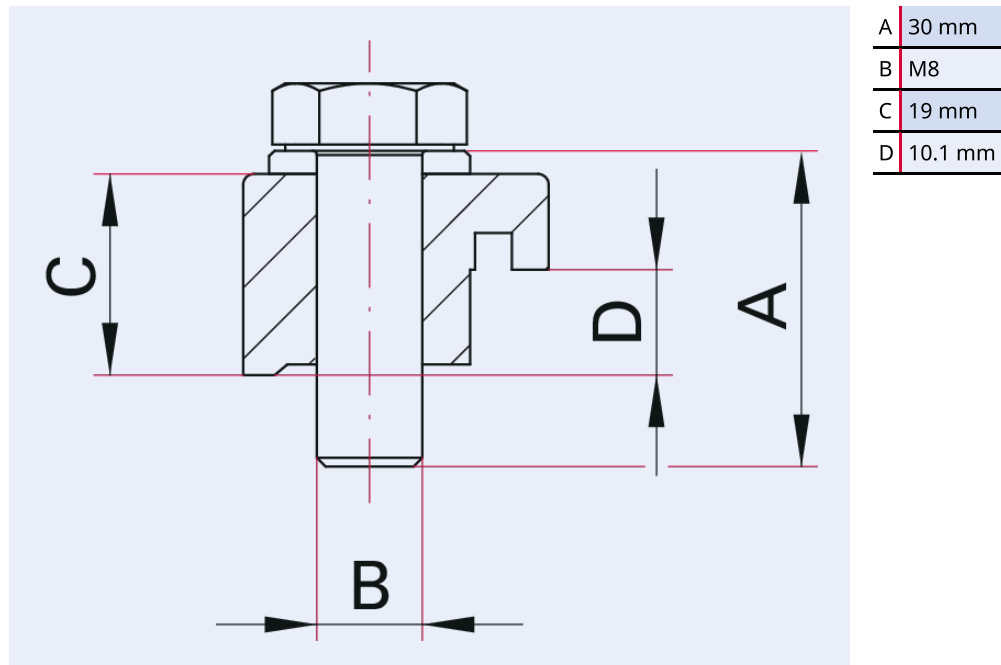


Illustration only

Claw clamp for base plate with sealing groove, zinc-plated steel, DN 63-100 ISO-K

- Suitable for use with metal and elastomer seals
- For installing an ISO-K flange on a base plate with O-ring groove
- If there is no O-ring groove, please use the longer single claw clamps (BPR)
- Not to be used for the installation of turbo pumps! Use the fastening elements given in the corresponding operating instructions.

Dimensions



Technical Data	Claw clamp for base plate with sealing groove, zinc-plated steel, DN 63-100 ISO-K
Temperature range	0 - 200 °C
Connection flange	DN 63 - DN 100 ISO-K
Material	Zinc-plated steel
Temperature range max.	200 °C 392 °F 473.15 K
Temperature range min.	0 °C 32 °F 273.15 K

Order number	Claw clamp for base plate with sealing groove, zinc-plated steel, DN 63-100 ISO-K
Claw clamp for base plate with sealing groove, zinc-plated steel, DN 63-100 ISO-K	350BPD100



Errors and/or changes excepted. - 5/14/2025

Are you looking for an optimum vacuum solution?
Talk to us:
Pfeiffer Vacuum Components & Solutions GmbH Germany
T +49 551 99963-0
info-cs@pfeiffer-vacuum.com

Or scan the barcode, to visit our web page:



<https://webportal.pfeiffer-vacuum.com/global/en/contact>

Follow Us On Social Media
#pfeiffervacuum



www.pfeiffer-vacuum.com

PFEIFFER 